

SEY₂KT RESEARCH

2022-2023

Sharon Jeroski

Horizon Research & Evaluation Inc

Overview

- Participation
- Themes
 - Collaborating and creating partnerships
 - Going into the Community
 - Welcoming families into schools
 - Connecting families to resources
 - Creating communities of practice
- Data collection
- Conclusions

Participation

- 37 school districts/communities and indigenous partners
- Child Care and Early Learning providers
- Child Care Resource and Referral Coordinators
- Regional governmental and non-governmental agencies
- Post-secondary organizations
- Over 5000 children
- More than 3500 families

CSL

- CSL training sessions played a critical role in development of the teams: regular meetings, individual consultations, resources/tools
- focused on collaboration and strengthening of relationships across the education and early years sector

Community partners

Over 400 community partners were acknowledged in monthly reports

Including:

- Child Care and Early Learning
- Post secondary
- ECE and EA program students
- College and hs volunteers

Members of nongovernmental organizations

- Including
 - Immigrant Services
 - Refugee Societies
 - Intercultural Associations
 - Pacific Sport (various regions)
 - YWCA/YMCA
 - Community Action Programs (e.g., East Kootenay Community Action Program for Children)
 - Family Resources Societies
 - Food Banks
 - Boys and Girls Clubs

One team's focus

Challenge:

- *How do we create relationships with our new partners so that they feel the way that we do about each other and the group?*

Answer:

- *We don't do anything without each other.*

Five themes

- Collaborating and creating partnerships
- Going into the Community
- Welcoming families into schools
- Connecting families to resources
- Creating communities of practice

Collaborating and creating partnerships

What has changed?

- Partnerships are both wider and deeper --- there are more and more active partners; they are involved in increasingly diverse ways; and they play a larger and larger role in planning, making decisions, facilitating the groups, and designing and leading activities.
 - *We discovered that we didn't really know what others organization do, so how could we support each other and keep families informed about what is available in our community! (a participant)*
- CSL has been an important tool in creating the trust and connections that support the work

Connecting to community

Welcoming families into the school community

- School-based experiences that increase familiarity and connections with the school (e.g., “Play in the K” Second breakfasts; gardening)
- Structured activities that focus on transitions into K (e.g., K registration fair; Welcome to Kindergarten)

Going into the community

- Community events that welcome all families (e.g., Community Early Years Fair; skating party; Family Fun Fair; Big Little People Events; street hockey)
- Events in the community specifically for children that will be transitioning into

Funded by the
Ministry of Education
and Childcare
SEY2KT Project

PLEASE JOIN US FOR A

BIG LITTLE

PEOPLE EVENT

Merritt Central Elementary School
1501 Voght Street, Merritt, BC

Do you have a child age 3-5?

Are you looking for more information about
community resources for young children?

JOIN US FOR OUR FIRST
LITTLE BIG PEOPLE EVENTS
APRIL 12TH
MAY 10TH
JUNE 14TH
FROM 10-11:30AM

WHAT IS IT?

Booths by local Early Years Organizations and Service Providers
An opportunity to see what services and activities are available for children and
families in the early years
Fun for 3-5 year olds
Promoting health and wellness
Snacks, prizes, fun and so much more!

The SEY2KT planning table is comprised of members from:
School District 58, Nicola Valley Infant Development, Literacy Merritt & Nicola Valley, LNIB, Upper Nicola Headstart,
Nzeman Aboriginal Infant Development, Nicola Valley Food Bank

For additional information please contact:

Daniella Bennie, District Vice Principal of Early Learning and Childcare at dbennie@365.sd58.bc.ca



Inching Our Way to K

All parents and children who will be attending SD28 Kindergarten
in September 2023 are invited to join us for a craft, snacks and fun.

Location: Friendship Centre Hall (319 N Fraser Dr.)

Date: Friday, April 21, 2023

Time: 3:00 - 5:00 p.m.

RSVP - Call 250-992-0430 or email joleneking@sd28.bc.ca

School District #53 presents



Pop Up Play and Free Dinner

Free Giveaways
Fun Games
Story Walk
Arts & Crafts
And a Lot More..

March 1st
4 - 6 PM
Oliver Regional Library

Oliver Place Mall

Our Valued Partners

Ministry of Education and Child Care
NOFRILLS
OneSky
Oliver CANADA'S WINE CAPITAL
OES Preschool
Little Wonders Childcare
OLIVER PARKS & RECREATION
Desert Sun
Interior Health
Literacy NOW
A&W
StrongStartBC
OLIVER LIBRARY
No registration needed. Questions? Email Melia Dirk at mdirk@sd53.bc.ca



Pop Up PLAY

Take a (Story) Walk with Us!

Families with children ages 0-6 are invited to join us. Saturdays February 11th and April 1st 10-11 am

Free, no registration required

What's a Story Walk? A multi-sensory experience where children enjoy interactive books, music, art and the outdoors.

Come dressed for the weather! These walks are stroller and child friendly.



Session 1

When: **Saturday, February 11th [10:00-11:00 am]**
Event: Musical Story Walk with children's musician Katie Brock. Starting at the rooftop parking lot, we will walk together to immerse ourselves in a children's story. Throughout the walk, there will be opportunities to engage in music, art, speaking and listening, social skills and more!

Location: West Vancouver Memorial Library Rooftop (sign in here on arrival)

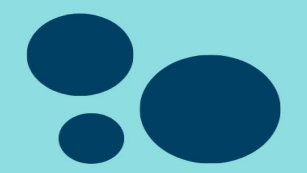
Session 2

When: **Saturday, April 1st [10:00-11:00 am]**
Event: POP Up PLAY- Story and Play with Shannon Ozirny

Location: Meet at the covered picnic area at John Lawson Park. We will walk together through the park, immerse ourselves in story, and use our senses to participate in a fun scavenger hunt

A bit about Katie

Katie Brock is a beloved children's musician from Horseshoe Bay. She is an energetic, fun-loving performer who enjoys sharing her catchy tunes with both children and grownups alike. An avid outdoor enthusiast, Katie loves to sing, dance and make joyful music together with families in nature!!



A bit about Shannon

Shannon Ozirny has been the Head of Youth Services at the West Vancouver Memorial Library since 2011. One of her favourite things about her job is working so closely with West Vancouver Schools and supporting local families in connecting with books and each other.

In partnership with West Vancouver Memorial Library and BC Ministry of Education and Child Care. We gratefully acknowledge the financial support of the province of BC through the Ministry of Education

ACTIVITÉ
GRATUITE
POUR TOUTE LA FAMILLE!



CHOCOLAT CHAUD
POUR TOUS ET PLAISIR
GARANTI!

INFO ET RÉSERVATION
jackcook@csf.bc.ca
250-635-9754

Viens rencontrer la communauté de l'école Jack-Cook

(école publique francophone)

**Glissade sur tubes (tubing)
à la montagne Shames Mountain**

11 FÉVRIER DE 10:00 À MIDI

Pour les enfants de moins de 5 ans (et leurs frères et soeurs) qui ne sont pas encore à l'école francophone et dont la langue maternelle de l'un des parents est le français.

Initiative financé par le projet: **SEY2KT** Strengthening Early Years to Kindergarten Transition

CSF Conseil scolaire francophone de la Colombie-Britannique | csf.bc.ca | f t i n @ | GRATUIT

SEY2K REPORT JAN-MAR 2023

Pacific Rim SD 70

Inquiry Question:
In what ways can we build and strengthen relationships and enhance connections among families and children within our communities and our schools? How can we build and strengthen existing relationships, and deepen understandings between Early Care and Learning Professionals, and Primary Educators?

- HIGHLIGHTS**
- Family Literacy Day-220 participants!
 - Pop Up Play- Ready Set Learn at Howitt Elementary- 55 participants
 - Pop Up Play Dino Dig at the Museum- 250 participants!
 - Pop Up Play- Play in the K
 - Team Dinner
 - PA & WC Meeting
 - Community Partners at Family Literacy Day



SEY2K PA Team Feb Connection Meeting



Play in the K



Pop Up- Dino Dig



Ready Set Learn



Family Literacy Day

www.pacificrimchildren.ca @pacificrimchildren

Creating
communities
of practice

Connecting
families to
resources

- *Using common resources (e.g., ELF; Wonderfull Me)*
- *As families are picking up bags and the prizes they won, they are becoming aware of services in the community that they did not know about before.*
-

In their words

- *This project has brought many partners together and broadened the initiative from school district to community.*
- *There is a strong appetite for connection and collaboration even when the world feels a little undone.*

Monthly Report (submitted to the researcher after each meeting and at the end of the project). Teams used this framework to summarize their work and planning.

Monthly summary

ACTIONS: What did you do?

OBSERVATIONS: What happened?

UNDERSTANDING: What did you
discover/learn?

PLAN: What's next?

Group Self-assessment (optional)

- We are a well-functioning and committed TEAM.
- We have an explicit common PURPOSE that focuses all our work.
- We focus on supporting each other's SOCIAL AND EMOTIONAL WELL-BEING
- We have informed and supportive DISTRICT LEADERSHIP.
- We are building RELATIONSHIPS with individual families.
- We are CONNECTING WITH OUR COMMUNITY.
- We bring a sense of JOY to this work!
- We are CONFIDENT that we are making a difference in our community (Spring only)

This is not like us YET	This is a bit like us	This is quite like us	This is a lot like us
-------------------------	-----------------------	-----------------------	-----------------------

When your team thinks about your work on SEY2KT this year

- *What is one thing you are **curious** about?*
- *What is one thing you are **confident** about?*
- *What is one thing you are **committed** to?*
- *What is something that is special about your team?*

Conclusions

- BC communities and schools are united by a profound desire to support young children and their families in feeling secure and joyful as they transition into school.
- Educators and community partners are inventive and tenacious in developing and tailoring strategies that reflect the unique strengths, interests, and needs in their community.
- Local leadership and support such as that provided by Early Learning Leads is a critical factor .
- Those working for change thrive on developing new leadership skills and strategies, such as those offered by CSL.

We learned that everybody is at a different point in their journey with the Early Learning Framework (ELF) and in their careers and experience. It was really lovely to learn from one another.

This is joyful work!